

SPECIFICATIONS, LISTINGS AND APPROVALS
Body Material hook: Steel and Zinc

Body material anchor: Plastic

Screw Material: Carbon Steel AISI-1018 with Zinc plating ASTM B633 Type III

KEY FEATURES & BENEFITS

- Installs in drywall, concrete and wood
- Extra-strong holding power
- Special toggling mechanism
- Easy to install
- All you need is a screwdriver
- No pre-drilling in drywall
- Decorative & stylish

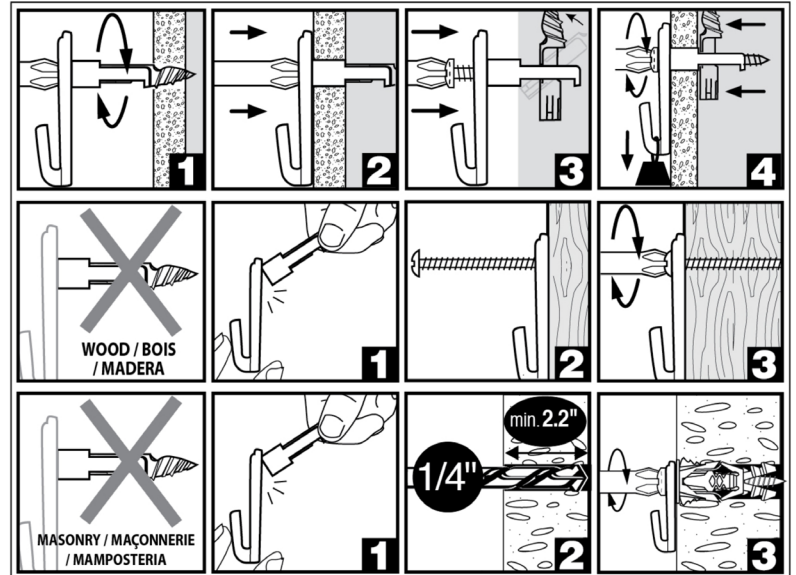
MATERIALS

INSTALLATION INSTRUCTIONS

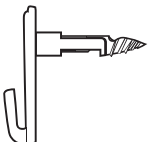
1. Using a screwdriver, pierce the wall with the tip of the MegaHook™. Screw clockwise.
2. Once the threaded portion is screwed into the wall, push the Megahook™ through until it is flush to the wall.
3. Continue screwing in the MegaHook™ until there is a great resistance.
4. This allows the toggle to anchor itself firmly behind the wall.

NOTES:

- Do not use in insulated drywall.
- COBRA can not be held responsible for any failure due to improper installation.
- Safe working loads represent a safety factor of 2:1 from ultimate test loads.
- Always follow the recommended weight limits for a safe installation.
- Always wear safety glasses.


ANCHOR PARAMETERS*
SAFE WORKING LOADS IN DRYWALL**

MACHINE SCREW SIZE	MATERIAL	1/2" (13 mm)	
		TENSION lb (kg)	SHEAR lb (kg)
3/16 x 2" (5 x 50 mm)	Zinc/Nylon	60 lb (27 kg)	100 lb (45 kg)


MEGAHOOK MEASUREMENTS

DIAMETER	LENGHT	MACHINE SCREW SIZE
0.45" (11,5 mm)	2.5" (63 mm)	3/16" (5 mm)

TOOLS REQUIRED


* For a complete list of the different packaging formats available please visit our website cobraanchors.com

** Loads may vary according to the quality of the drywall.