

## ANCHOR CENTER

2 Feet

- ▶ BEST PRICE AND VALUE
- ▶ CONTRACTOR GRADE QUALITY
- ▶ HIGH MARGIN PROFIT CENTER
- ▶ EASE TO SHOP
- ▶ BONUS IN EVERY PACK: DRILL BIT WITH / WITHOUT DRIVE BIT
- ▶ COMPLETE ASSORTMENT OF HEX AND FLAT HEADS (FROM 1 1/4" TO 4" LENGTH IN BOTH 3/16" AND 1/4" DIAMETERS)
- ▶ COLOUR CODING: YELLOW = FLAT HEAD  
RED = HEX HEAD
- ▶ 4 DIFFERENT PACK TYPES (10, 25, 100 AND BULK FROM 500 TO 1000 UNITS) THE IDEAL FIT FOR DIFFERENT USER'S NEEDS
- ▶ RE-CLOSABLE PACKS FOR EASY STORAGE



**COBRA**  
ANCHORS ► FIXATIONS  
www.cobraanchors.com

# COBRA

ANCHORS ► FIXATIONS

CONTRACTOR  
GRADE

RUST RESISTANT COATING  
**COBRA  
COAT**

ACQ  
COMPATIBLE



**Manufacturing Plant  
and Distribution Center**

504 Mt. Laurel Ave.  
Temple, Pennsylvania, 19560, U.S.A.  
T. (610) 929 5764 • 800 824 7717  
F. (610) 929 2517 • 800 432 4143



**Head Office, Manufacturing Plant  
and Distribution Center**

8051 Metropolitain Blvd. E.  
Montreal, Quebec, H1J 1J8, Canada  
T. (514) 354 2240 • 800 824 7717  
F. (514) 355 7421 • 800 432 4143



2010 Canadian award for best export company

2010 Canadian award for best achievement in technology and innovation

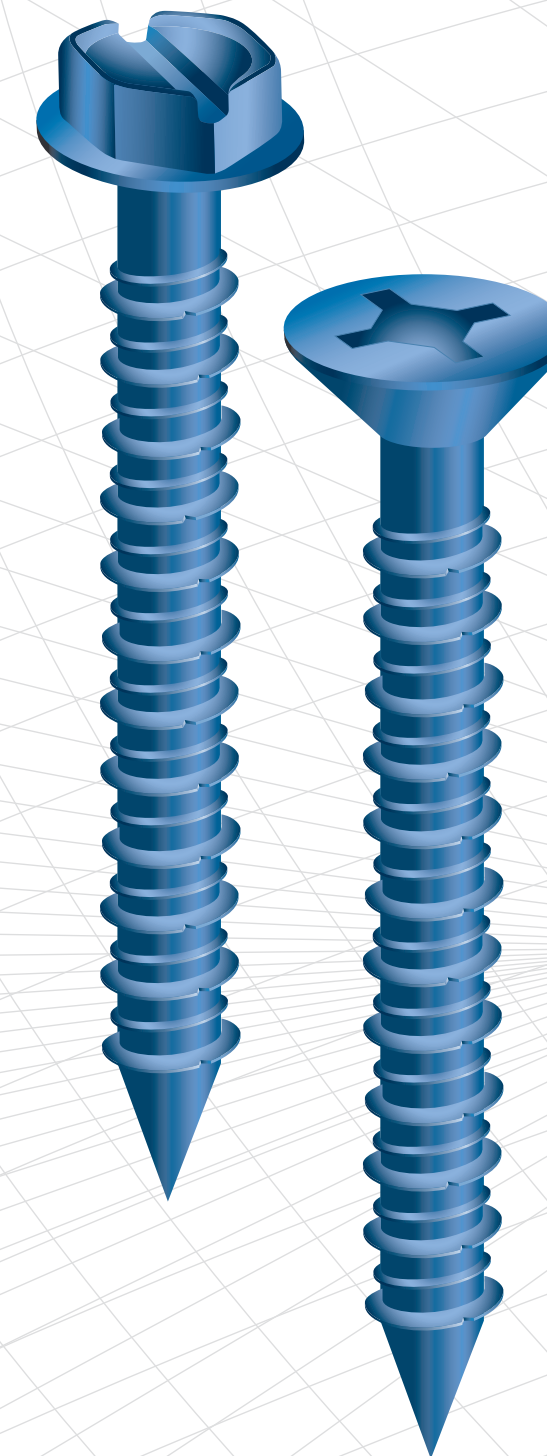


AQMAT 2012  
Winner in Supplier Category of "Coup de cœur" Award

**The Power of Innovation**  
www.cobraanchors.com



CONCRETE  
SCREWS



**CobraTap**®

CONTRACTOR  
GRADE

BEST VALUE

QUALITY

CONCRETE SCREWS PROGRAM

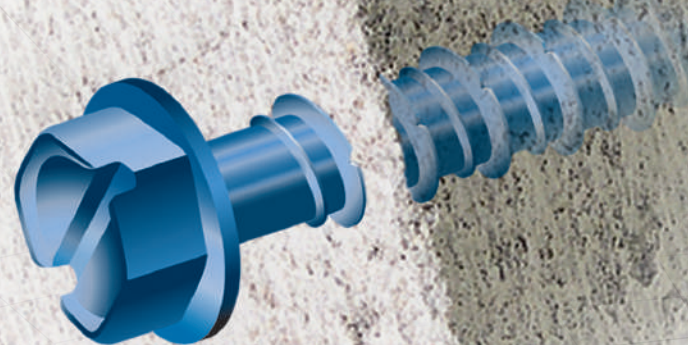


OVER 22 WORLDWIDE OWNED PATENTED PRODUCTS

**COBRA**  
ANCHORS ► FIXATIONS  
The Power of Innovation



Hex Head



Flat Head



PERFECT FOR THESE MATERIALS



▶ HIGH GRADE STEEL  
TO ENSURE THE BEST TORQUE,  
PULL AND SHEAR

▶ HIGH & LOW THREAD  
EASE OF INSTALLATION  
AND MAXIMUM HOLDING  
POWER

▶ FLAT HEAD IS PHILLIPS &  
ROBERTSON COMPATIBLE

▶ COBRA COAT® TOP BLUE  
FLUOROCARBON COATING  
FOR MAXIMUM CORROSION  
RESISTANCE

\* REFER TO TECHNICAL GUIDE FOR  
PRECISE WEIGHT LOAD IN MATERIAL

## ACCESSORIES



DRILL BIT



DRIVE BIT

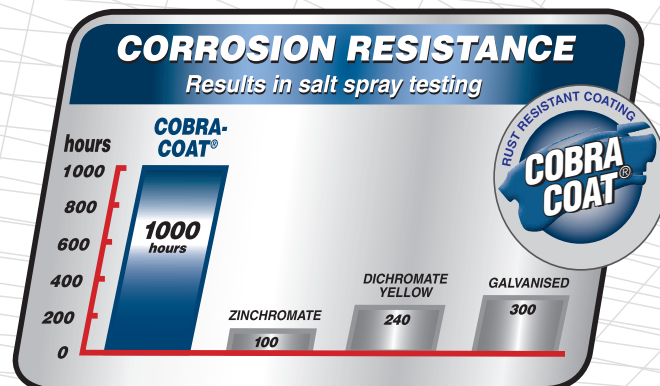


SOCKET DRIVE



INSTALLER TOOL KIT

## TECHNICAL SPECIFICATIONS



### WEIGHT LOADS

MAX. LOAD IN CONCRETE AT 3000 psi & 1 1/4" EMBEDMENT

SCREW SIZE	PULL ↔	SHEAR ↴
3/16"	650 lbs	800 lbs
1/4"	1400 lbs	1700 lbs

## POSSIBLE APPLICATIONS



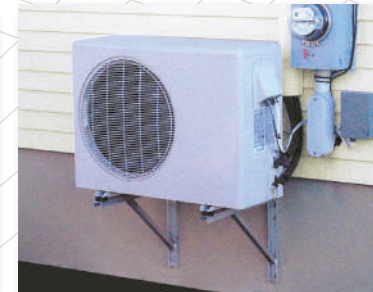
Partitions on concrete



Stair rails on block



Hand rails on concrete



Exterior fixtures on foundation

## PACK SIZES AVAILABLE

**CobraTap®**



"W" pack  
10 screws + drill bit



"J" pack  
25 screws +  
drill bit & socket drive\*



"T" pack  
100 screws +  
drill bit & drive bit\*



"X" pack  
variable large quantities  
(500 to 1000 pieces)

\*Socket drive or drive bit included  
depending on screw head type.